

Graph the Constellations

A Lesson Integrating Science and Math for the Upper Elementary and Middle Grades Classroom

Graph the Constellations

KEY

Ursa Major

Minor

Ce

located at
er name?

Ursa Major

Coordinates List

Directions: Use the coordinates (ordered pairs) on the list to graph some of the major North Polar Constellations. Plot each point, and then connect it to the next point. Some points will be listed twice so that you can close the connection. Be sure to answer the question at the bottom of the graph page as well.

<p>Cassiopeia (The Queen)</p> <p>(1,8) (1,6) (3,6) (2,4) (4,4)</p>	<p>Cepheus (The King)</p> <p>(10,1) (8,4) (8,8) (11,6) (12,3)</p> <p>then back to (10,1)</p>
<p>Ursa Minor (The Small Bear; The Little Dipper)</p> <p>(9,13) (10,12) (12,12) (14,13) (15,13) (16,14) (15,15) then back to (14,13)</p>	<p>Ursa Major (The Large Bear; The Big Dipper is a part of this constellation.)</p> <p>(5,28) (7,26) Stop</p> <p>Start again at (5,27) (7,26) (8,23) (12,23) (12,25) (15,25) (16,23) (18,22) (19,21) (22,21)</p> <p>You can connect (16,23) and (12,23) to see the Big Dipper completed.</p>
<p>Draco (The Dragon)</p> <p>(12,19) (14,18) (18,17) (21,15) (22,13) (20,12) (18,11) (15,10) (13,7) (15,7) (21,7) (22,8) (23,8) (23,6) then back to (21,7)</p>	

Name: _____

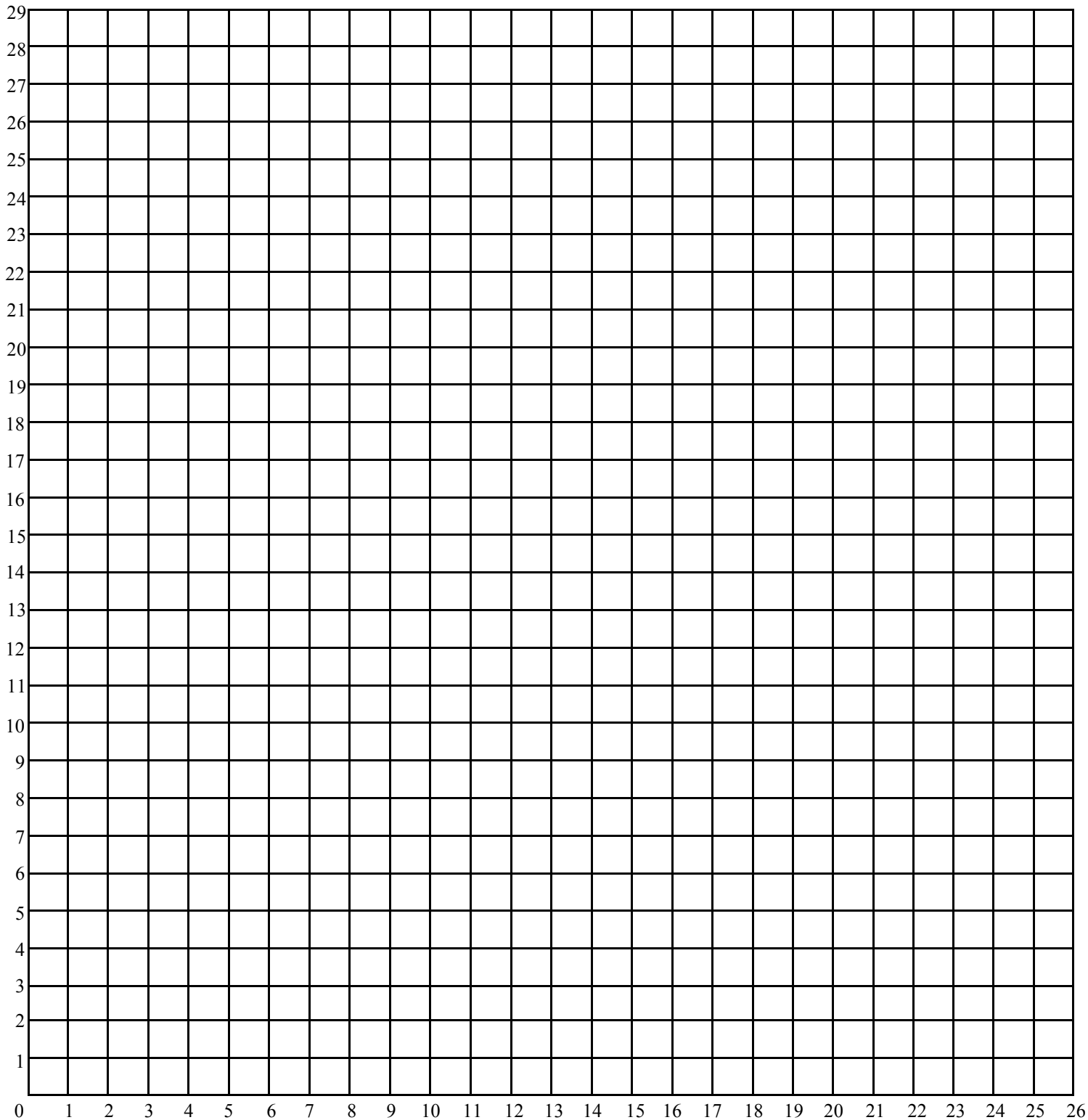
***Polaris is located at (9, 13). Label it.

What is Polaris's other name?

Anna Colley

★☆☆ Graph the Constellations ☆☆☆

Name: _____



★★Polaris is located at (9, 13). Label it.

★★What is Polaris's other name? _____





Graph the Constellations

Coordinates List



Directions: Use the coordinates (ordered pairs) on the list to graph some of the major North Polar Constellations. Plot each point, and then connect it to the next point. Some points will be listed twice so that you can close the connection. Be sure to answer the question at the bottom of the graph page as well.

Cassiopeia (The Queen)

(1,8) (1,6) (3,6) (2,4) (4,4)

Cepheus (The King)

(10,1) (8,4) (8,8) (11,6) (12,3)

then back to (10,1)

Ursa Minor (The Small Bear; The Little Dipper)

(9,13) (10,12) (12,12) (14,13)
(15,13) (16,14) (15,15)
then back to (14,13)

Ursa Major (The Large Bear; The Big Dipper is a part of this constellation.)

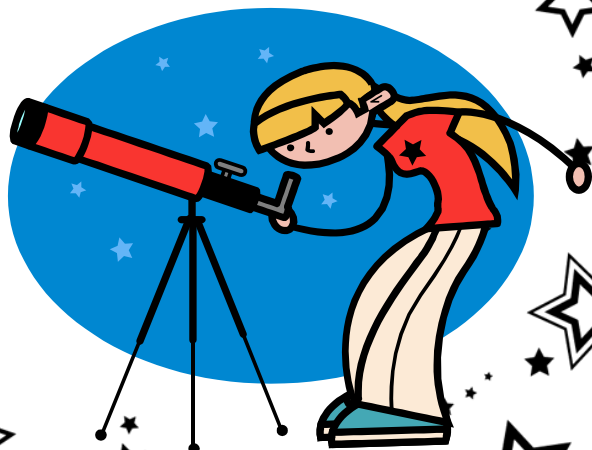
(5,28) (7,26) Stop

Start again at (5,27) (7,26) (8,23)
(12,23) (12,25) (15,25) (16,23)
(18,22) (19,21) (22,21)

You can connect (16,23) and (12,23) to see the Big Dipper completed.

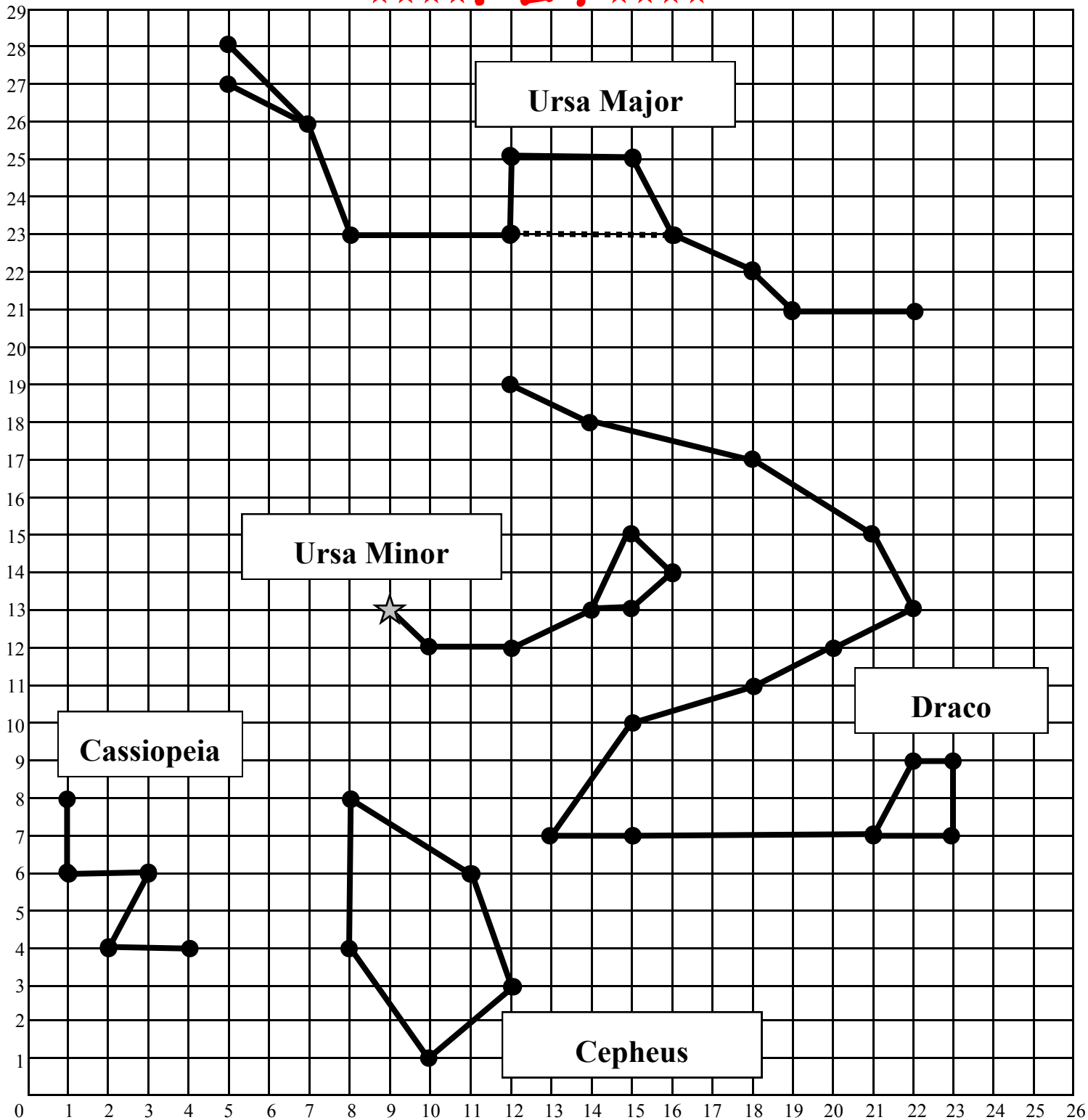
Draco (The Dragon)

(12,19) (14,18) (18,17) (21,15)
(22,13) (20,12) (18,11) (15,10)
(13,7) (15,7) (21,7) (23,7)
(23,9) (22,9)
then back to (21,7)



★☆☆☆ Graph the Constellations ★☆☆☆

★☆☆☆ KEY ★☆☆☆



★★ Polaris is located at (9, 13). Label it. ☆ = Polaris

★★ What is Polaris's other name? The North Star

